



## RAMSES – Software for Level 2 Automation

**ROSIN Solutions S.L.** is specialised in process automation for the steel industry and mechanical and plant engineering industries. **Since 1985** ROSIN Solutions S.L. deliver Turn-Key-solutions to customer specifications.

### Good reasons to choose us for your next automation project:

- Core-competence in production automation systems.
- Customer specific solutions with all advantages of a standard product.
- Life-time support and maintenance of all our products up to 24h/7days.

### With our know-how, we created the **RAMSES** Level 2 Automation System.

- **RAMSES** based automation systems are **always** solutions **specific to** the needs of the **customer**. They can be fitted to **any existing environment** (hardware, operating systems, data base systems, other automation levels ...).
- **RAMSES** can **interface to any** crane, PLC, measuring device, laboratory analyser, PC or other device in your **plant**.
- **RAMSES** is the **base for production automation** in the Meltshop, Caster, Laboratory, Scrap Yard, in Colour Coating Lines etc. It is also used for **emission tracking** to detect sources of air pollution.
- **RAMSES** communicates with ERP, MES, SCM systems.

### RAMSES Meltshop and Caster Automation



- Production planning, orders for Scrap Yard
- Real-time information about EAF, LF, CC
- Slab Tracking
- Extensive reporting

### RAMSES Colour Coating Automation



- Production planning
- Order management
- Real-time information about Payoffs
- Defect marking function

### RAMSES Laboratory Information System



- Communication with all types of analysers
- Automatic merging of analyses
- Forwarding of analyses to Level 2
- Statistics and Trends

### RAMSES Emission Tracking



- Real-time recording of air pollution measurement readings
- Correlation with weather data
- Particle fall out monitored with cameras
- Intelligent software module eliminates inner and outer noise

## ROSIN Solutions S.L. - experienced and reliable

## Some examples of **RAMSES** projects

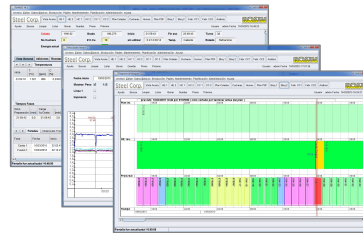


### **RAMSES**

#### Meltshop & Caster Automation

2004 Meltshop Automation  
2007 Slab Tracking  
2009 Emission Tracking  
2012 Caster Automation  
2013 Production Planning

24h Support and maintenance

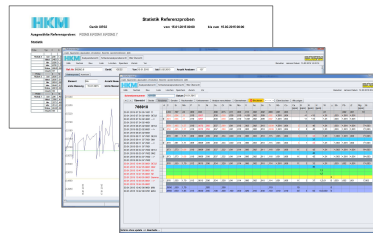


Hüttenwerke Krupp Mannesmann

### **RAMSES**

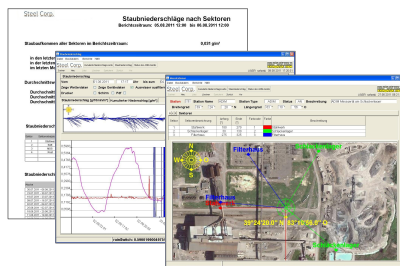
#### Laboratory Information System

2005 Laboratory Automation  
2011 Migration Windows - Solaris  
Sqlserver - Informix  
2013 Additional analysing devices,  
plausibility checks for slag  
analysis, blast furnace samples



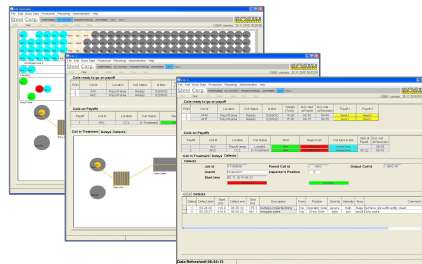
### **RAMSES**

#### Emission Tracking



### **RAMSES**

#### Colour Coating Automation



## Contact us:



[Petra.Wiegink@rosin.com](mailto:Petra.Wiegink@rosin.com)  
Phone: +34 952 11 13 19  
Mobile: +34 627 454 458



[Heinz-Gerd.Angenendt@rosin.com](mailto:Heinz-Gerd.Angenendt@rosin.com)  
Phone +49 4791 57403  
Mobile +49 151 17850149

## Why choose **RAMSES**?

- Maximum protection of your investment
- Customised solutions with the advantages of a standard product
- Layout of screens and reports defined by customer
- Minimum disturbance during commissioning
- Minimum overhead for IT department
- Perfectly functional in virtual environments
- Guaranteed for operational reliability
- Support and maintenance throughout life-time
- Production status at a glance, in any part of the plant
- Interfaces to all devices in the plant
- Long-term archive with all reports
- Plant status information also via **Smartphone App**

## We offer

- Competence and know-how
- The best solution for any automation you may need
- Very cost-effective solutions

## We do

- Requirements analysis
- Project management
- Commissioning without disturbance to production
- Support and maintenance